

ALTA/ACSM SURVEY FOR  
**ANDRADE REALTY HOLDINGS, LLC**  
**SPECIALIZED TITLE SERVICES, INC.**  
**LAWYERS TITLE INSURANCE CORPORATION**

LOCATED IN L.L. 261 - 3RD LAND DISTRICT  
 BEN HILL COUNTY, GEORGIA  
 SCALE: 1" = 500' DATE: FEBRUARY 26, 2008

HAMPTON & ASSOCIATES SURVEYING CO.  
 1605 HIGHWAY 41 NORTH  
 TIFTON, GEORGIA 31794  
 PHONE: 229-382-2709 FAX: 229-382-2099



MAGNETIC NORTH

GRAPHIC SCALE



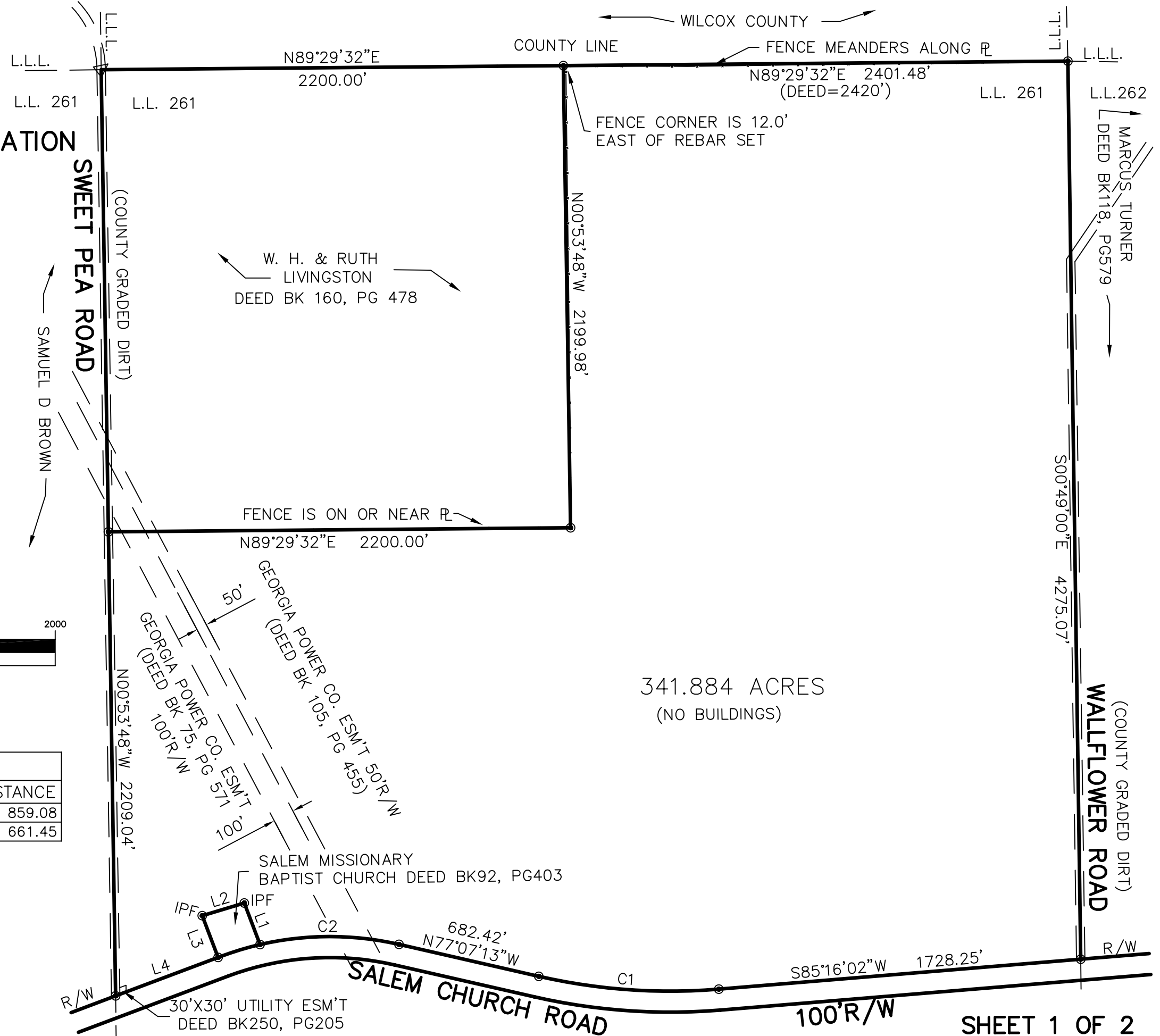
( IN FEET )  
 1 inch = 500 ft.

CURVE TABLE

CURVE	LENGTH	RADIUS	CHORD BEARING	CHORD DISTANCE
C1	862.47	2805.72	N85°55'36"W	859.08
C2	667.11	1476.20	S89°56'00"W	661.45

LINE TABLE

LINE	LENGTH	BEARING	DEED
L1	211.50	N20°48'01"W	208.71
L2	208.76	S73°13'57"W	208.71
L3	212.52	S20°47'33"E	208.71
L4	521.00	S69°24'48"W	



341.884 ACRES  
 (NO BUILDINGS)