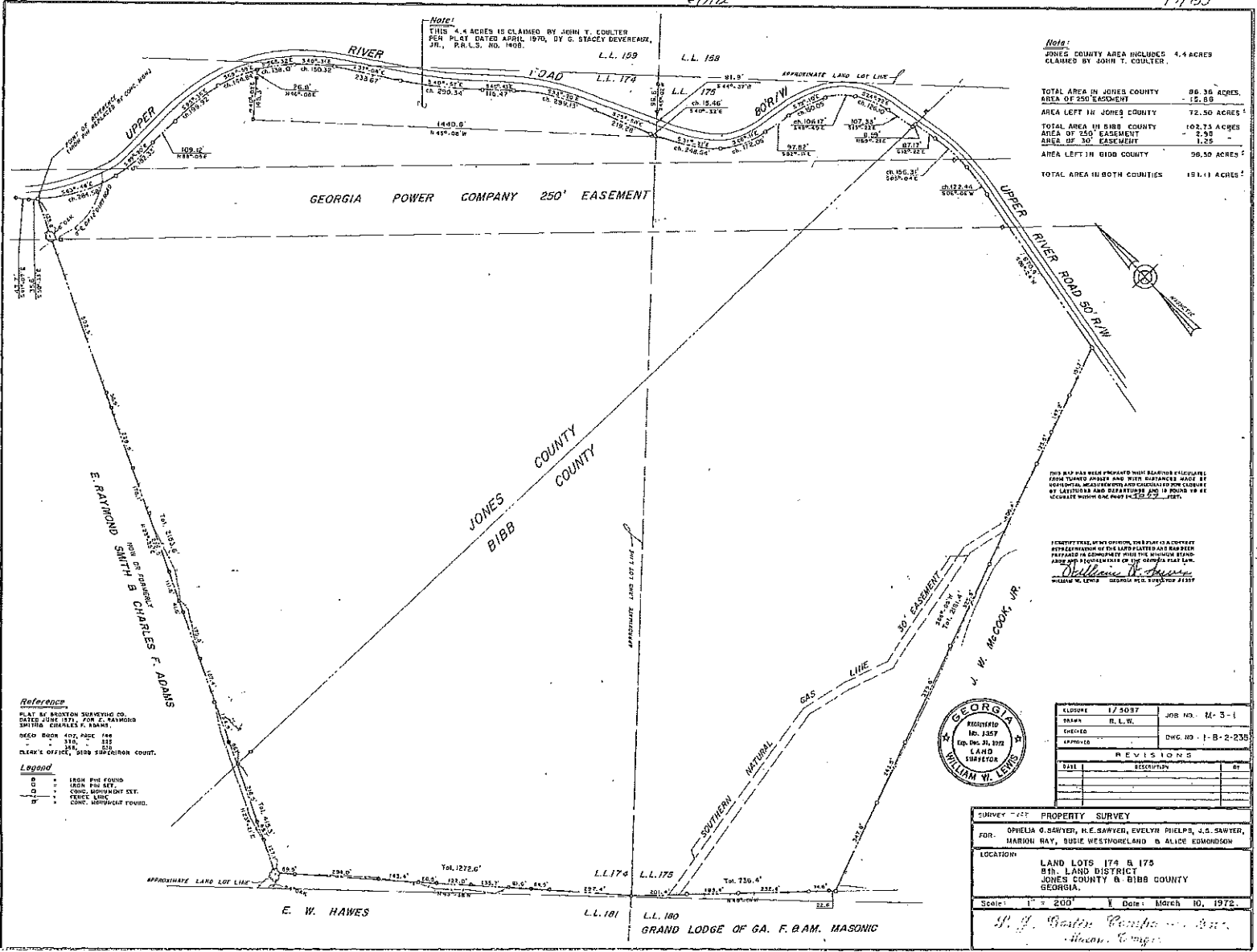


6-3-72

6/5/72

49/133



Note:
THIS 4.4 ACRES IS CLAIMED BY JOHN T. COULTER
PER PLAT DATED APRIL 1970, BY S. STACEY DEVEREAUX,
JR., P.R.L.S. NO. 1408.

Note:
JONES COUNTY AREA INCLUDES 4.4 ACRES
CLAIMED BY JOHN T. COULTER.

TOTAL AREA IN JONES COUNTY	86.36 ACRES
AREA OF 250' EASEMENT	15.89
AREA LEFT IN JONES COUNTY	72.50 ACRES
TOTAL AREA IN BIBB COUNTY	102.73 ACRES
AREA OF 250' EASEMENT	2.50
AREA OF 30' EASEMENT	1.25
AREA LEFT IN BIBB COUNTY	96.98 ACRES
TOTAL AREA IN BOTH COUNTIES	191.11 ACRES

THIS MAP WAS MADE FROM A PHOTO AERIAL PHOTOGRAPH
TAKEN THROUGH BIRDS AND WITH DISTANCES MADE BY
GEOMETRIC MEASUREMENTS AND CALCULATED FOR COURSE
BY THE USE OF THE TRIANGLE AND THE GEOMETRIC
METHODS OF THE GEOMETRIC PLAT LAW.

I HEREBY CERTIFY THAT THIS MAP IS A CORRECT
REPRODUCTION OF THE LAND PLAT AND HAS BEEN
PREPARED IN ACCORDANCE WITH THE GEOMETRIC
PLAT LAW OF THE STATE OF GEORGIA.

William W. Lewis
REGISTERED SURVEYOR
STATE OF GEORGIA

Reference
PLAT BY BROXTON SURVEYING CO.
DATED JUNE 1971 FOR E. RAYMOND
SMITH & CHARLES F. FARMERS

Legend
 ○ IRON PIN FOUND
 □ IRON PIN SET
 ○ CONC. MONUMENT EXT.
 ○ FENCE LINE
 ○ CONC. MONUMENT FOUND



DATE	1/2/57	JOB NO.	M-3-1
DRAWN	R.L.W.	APPROVED	DWG. NO. 1-B-2-235
REVISIONS			
DATE	DESCRIPTION	BY	

SURVEY - 225 PROPERTY SURVEY
 FOR: OPHELIA G. SCHYER, H.E. SAWYER, EVELYN PHELPS, J.S. SAWYER,
 MARION RAY, SUSIE WESTPHORLAND & ALICE EDMONDSON
 LOCATION: LAND LOTS 174 & 175
 8TH LAND DISTRICT
 JONES COUNTY & BIBB COUNTY
 GEORGIA
 Scale: 1" = 200' Date: March 10, 1972
S. J. Gorden
 Surveyor