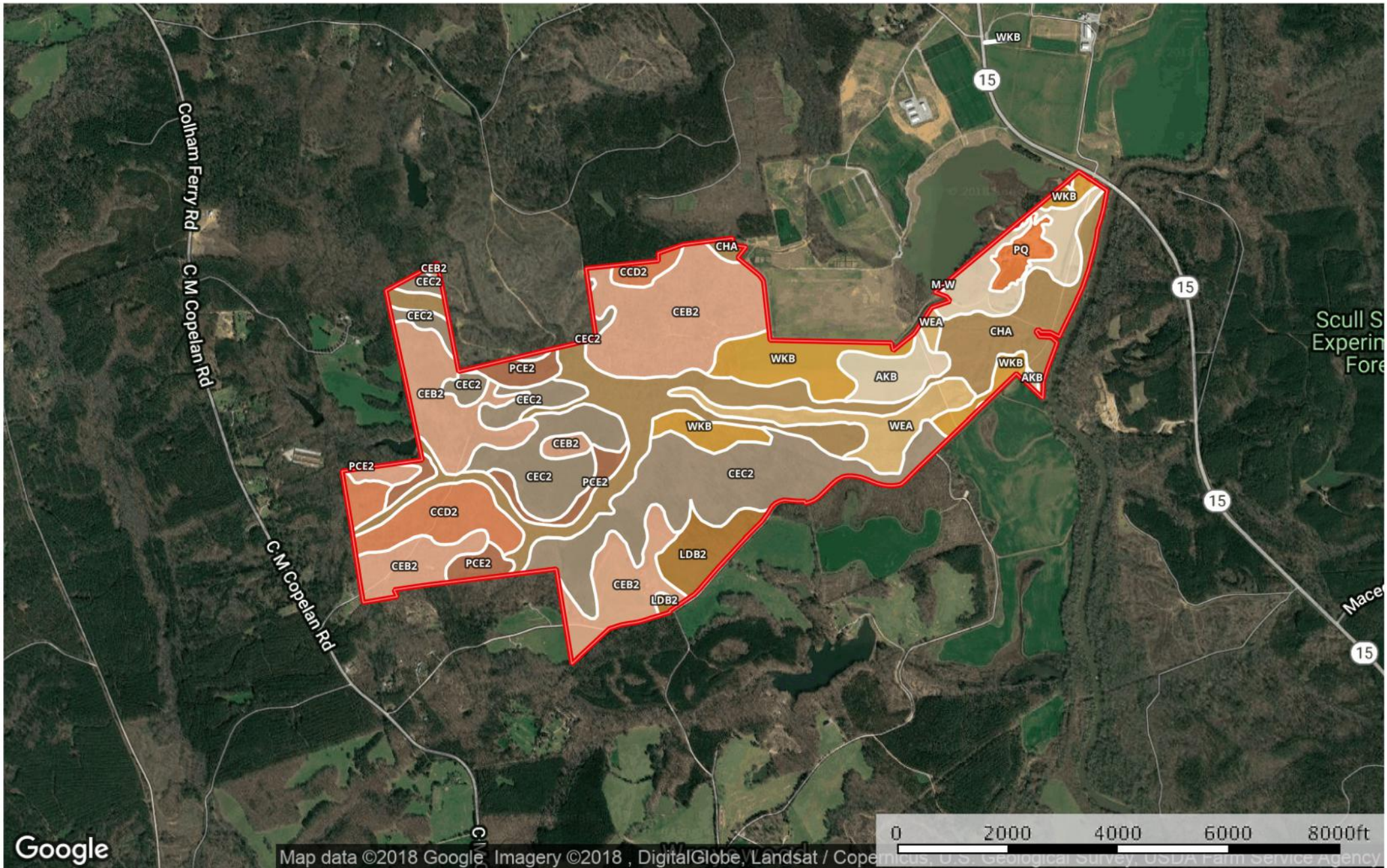


Ward Road - Soil Report

Greene County, Georgia, 841.74 AC +/-



Google
Map data ©2018 Google, Imagery ©2018, DigitalGlobe, Landsat / Copernicus, U.S. Geological Survey, USDA Farm Service Agency

Boundary



 All Polygons

SOIL CODE	SOIL DESCRIPTION	ACRES	%	CAP
ChA	Chewacla silt loam, 0 to 2 percent slopes, frequently flooded	157.4	18.65	6w
Pq	Pits, quarries	12.2	1.44	8s
AkB	Altavista sandy loam, 2 to 6 percent slopes, rarely flooded	58.6	6.94	2e
WkB	Wickham sandy loam, 2 to 6 percent slopes, rarely flooded	66.2	7.85	2e
M-W	Miscellaneous water	0.8	0.09	8w
CeC2	Cecil gravelly sandy loam, 6 to 10 percent slopes, moderately eroded	188.7	22.35	3e
CeB2	Cecil gravelly sandy loam, 2 to 6 percent slopes, moderately eroded	209.2	24.78	2e
CcD2	Cataula-Cecil complex, 6 to 15 percent slopes, moderately eroded	51.5	6.1	4e
WeA	Wehadkee loam, 0 to 2 percent slopes, frequently flooded	38.6	4.57	6w
LdB2	Lloyd gravelly loam, 2 to 6 percent slopes, moderately eroded	26.1	3.09	2e
PcE2	Pacolet sandy loam, 15 to 25 percent slopes, moderately eroded	34.9	4.13	6e
TOTALS		844.1	100%	3.53

Capability Legend

Increased Limitations and Hazards

Decreased Adaptability and Freedom of Choice Users

Land, Capability
Class(non-irrigated)



'Wild Life'

• • • • • • • •

Forestry

• • • • • • •

Limited

• • • • • • •

Moderate

• • • • • •

Intense

• • • • •

Limited

• • • •

Moderate

• • •

Intense

• •

Very Intense

•

Grazing Cultivation

(c) climatic limitations (e) susceptibility to erosion

(s) soil limitations within the rooting zone (w) excess of water