

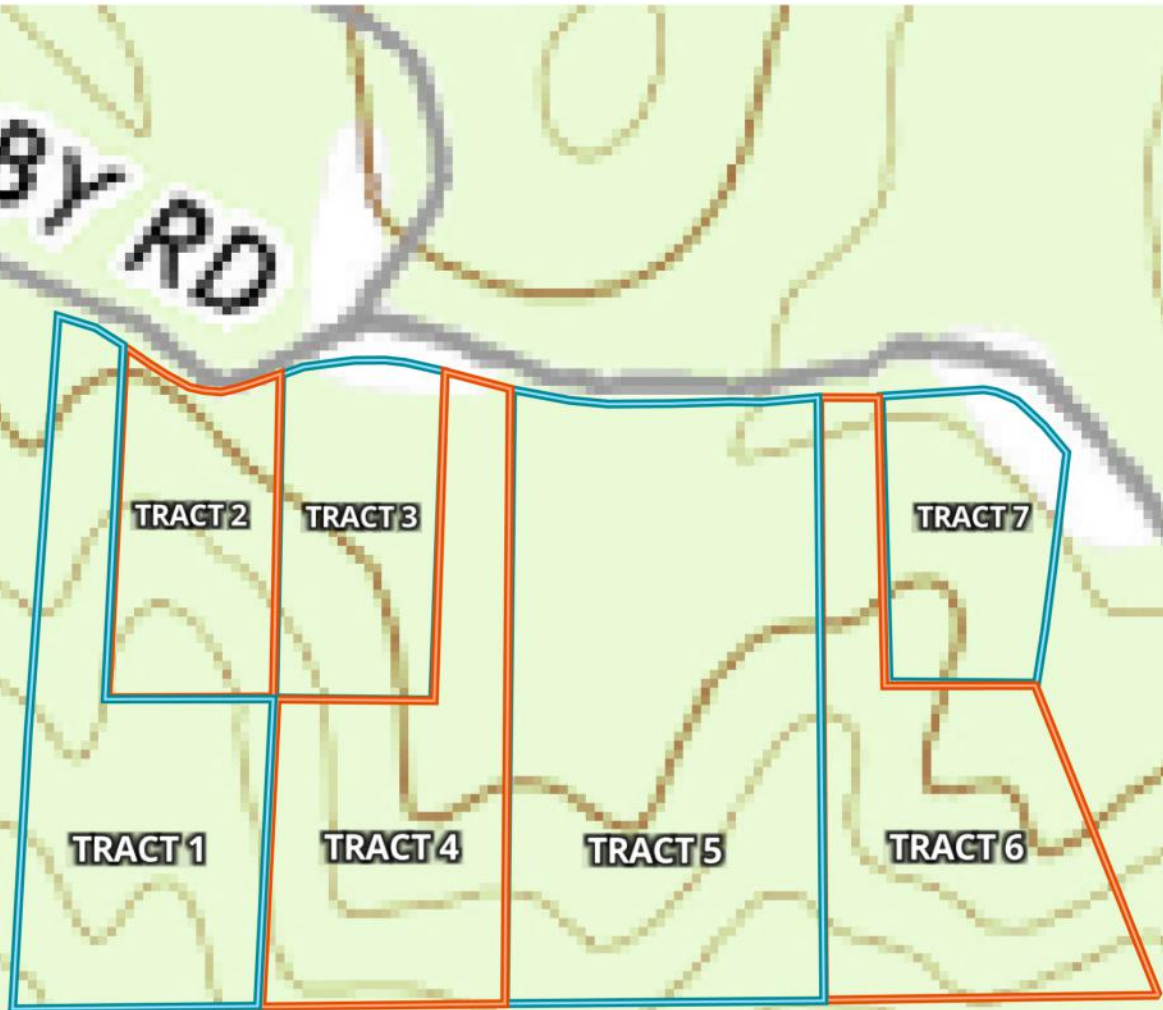
TRACT ACREAGE:

TRACT 1: 4.00 +/- ACRES
TRACT 2: 2.00 +/- ACRES
TRACT 3: 3.00 +/- ACRES
TRACT 4: 4.00 +/- ACRES
TRACT 5: 8.00 +/- ACRES
TRACT 6: 4.00 +/- ACRES
TRACT 7: 2.00 +/- ACRES

TOTAL ACRES: 27.00 +/- ACRES

TRACT ROAD FRONTAGES

TRACT 1: 106 +/- FT
TRACT 2: 250 +/- FT
TRACT 3: 235 +/- FT
TRACT 4: 106 +/- FT
TRACT 5: 445 +/- FT
TRACT 6: 90 +/- FT
TRACT 7: 310 +/- FT



Tract 2 Tract 3 Tract 1 Tract 4 Tract 5 Tract 6 Tract 7 Stream, Intermittent River/Creek Water Body

