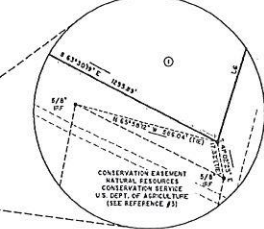
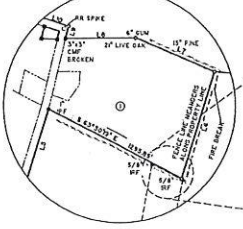
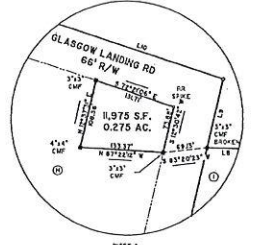


NOTES

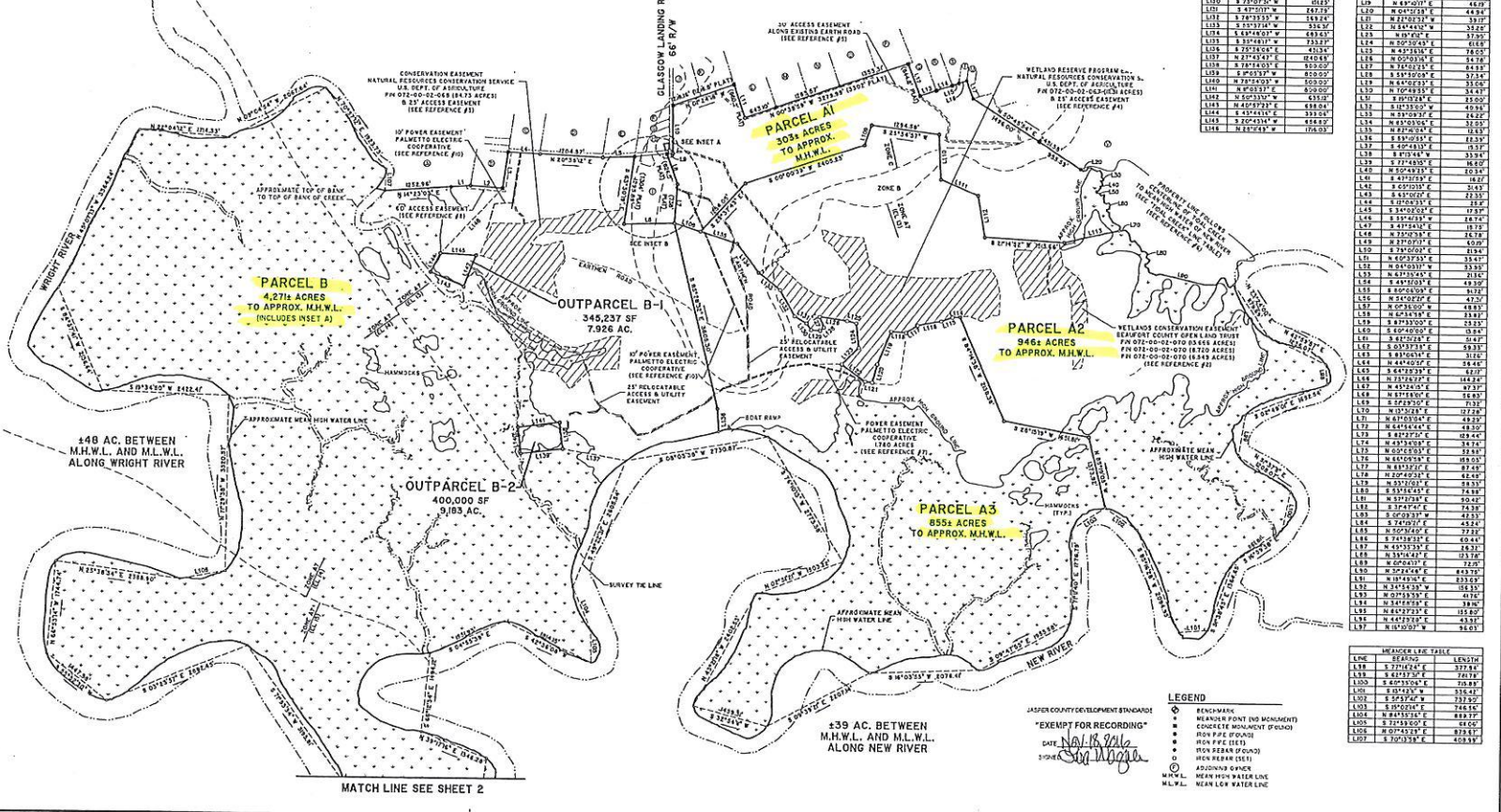
1. ALL CORNERS MARKED WITH 3/4" IRON PIPE, 24" LONG WITH CAP STAMPED "TM" UNLESS OTHERWISE NOTED.
2. DIMENSIONS AND DIRECTIONS SHOWN ON THIS SURVEY ARE BASED ON SOUTH CAROLINA STATE PLANE COORDINATE SYSTEM (SCS83).
3. ACCORDING TO THE STATE MAP NO. 4265, PARCELS 2600, 2600B & 2601C, REVISED SEPTEMBER 23, 1938, THE PROPERTY SHOWN ON THIS PLAT, LIES IN FLOOD WAYS ZONE C.
4. PLAT SHALL NOT BE USED FOR FLOOD ZONE DETERMINATION IT IS THE OWNER'S RESPONSIBILITY TO REFER TO CURRENT FEMA FLOOD INSURANCE RATE MAPS AND THE FEMA FLOOD INSURANCE MAPS CHANGE PERIODICALLY AND MAY VARY FROM WHAT IS SHOWN HEREON.
5. THE TAX PARCEL IDENTIFICATION NUMBERS (PIN) FOR THE PROPERTY PLATTED HEREON ARE PARCELS A1, 070-00-00-070 AND PARCELS B, 070-00-00-070.
6. WETLANDS THAT EXIST ARE UNDER THE JURISDICTION OF THE CORPS OF ENGINEERS AND/OR THE DEPARTMENT OF MARINE AND FISHERIES. LOT OWNERS AND THE DEVELOPER ARE SUBJECT TO PENALTY BY LAW FOR OBSTRUCTION TO THESE AGENCIES' ACTIONS WITHOUT PROPER PERMITS AND APPROVAL.
7. WETLANDS SHOWN HEREIN FROM VARIOUS MAPS AND RECORDS AND NOT VERIFIED BY THOMAS & HUTTON FOR THE PURPOSES OF THIS SURVEY.
8. HIGH ELEVATION LINES SHOWN ARE FOR ILLUSTRATIVE PURPOSES ONLY. MARKS LOCATED FROM AERIAL PHOTOGRAPHS AND HAVE NOT BEEN FIELD SURVEYED BY THOMAS & HUTTON ENGINEERS PC.
9. EASTERN ROAD SHOWN ARE FOR ILLUSTRATIVE PURPOSES ONLY. MARKS LOCATED FROM AERIAL PHOTOGRAPHS AND HAVE NOT BEEN FIELD SURVEYED BY THOMAS & HUTTON ENGINEERS PC.
10. PROPERTY LINE ALONG REAR RIVER IS NEW MEAN WATER MARK ALONG MEAN HIGH WATER ELEVATION 23.7 NAVD83.
11. ACRES SHOWN ARE TO MEAN HIGH WATER LINE AND MAY APPROXIMATE.
12. UNDER THE SOUTH CAROLINA CONSTITUTION AND BY STATUTE, THE STATE OWNS IN PUBLIC TRUST THE FOREBAY BELOW THE HIGH WATER MARK OF NAVIGABLE WATER.
13. MEAN HIGH WATER MARK AND MEAN LOW WATER MARK DETERMINED FROM R.T.E. GPS AND TOTAL STATION.
14. CONVEYED AND FACTORY - LOGS/808.
15. FOR PLAN DISTANCES SEE REFERENCE #I SHEET B.
16. FOR MEASUREMENT TABLE SEE SHEET Z.
17. FOR ADDITIONAL CORNER TABLE SEE SHEET Z.
18. FOR REFERENCES SEE SHEET Z.



DIMENSION TABLE		LINE TABLE	
L101	1.0000000	L101	1.0000000
L102	1.0000000	L102	1.0000000
L103	1.0000000	L103	1.0000000
L104	1.0000000	L104	1.0000000
L105	1.0000000	L105	1.0000000
L106	1.0000000	L106	1.0000000
L107	1.0000000	L107	1.0000000
L108	1.0000000	L108	1.0000000
L109	1.0000000	L109	1.0000000
L110	1.0000000	L110	1.0000000
L111	1.0000000	L111	1.0000000
L112	1.0000000	L112	1.0000000
L113	1.0000000	L113	1.0000000
L114	1.0000000	L114	1.0000000
L115	1.0000000	L115	1.0000000
L116	1.0000000	L116	1.0000000
L117	1.0000000	L117	1.0000000
L118	1.0000000	L118	1.0000000
L119	1.0000000	L119	1.0000000
L120	1.0000000	L120	1.0000000
L121	1.0000000	L121	1.0000000
L122	1.0000000	L122	1.0000000
L123	1.0000000	L123	1.0000000
L124	1.0000000	L124	1.0000000
L125	1.0000000	L125	1.0000000
L126	1.0000000	L126	1.0000000
L127	1.0000000	L127	1.0000000
L128	1.0000000	L128	1.0000000
L129	1.0000000	L129	1.0000000
L130	1.0000000	L130	1.0000000
L131	1.0000000	L131	1.0000000
L132	1.0000000	L132	1.0000000
L133	1.0000000	L133	1.0000000
L134	1.0000000	L134	1.0000000
L135	1.0000000	L135	1.0000000
L136	1.0000000	L136	1.0000000
L137	1.0000000	L137	1.0000000
L138	1.0000000	L138	1.0000000
L139	1.0000000	L139	1.0000000
L140	1.0000000	L140	1.0000000
L141	1.0000000	L141	1.0000000
L142	1.0000000	L142	1.0000000
L143	1.0000000	L143	1.0000000
L144	1.0000000	L144	1.0000000
L145	1.0000000	L145	1.0000000
L146	1.0000000	L146	1.0000000
L147	1.0000000	L147	1.0000000
L148	1.0000000	L148	1.0000000
L149	1.0000000	L149	1.0000000
L150	1.0000000	L150	1.0000000
L151	1.0000000	L151	1.0000000
L152	1.0000000	L152	1.0000000
L153	1.0000000	L153	1.0000000
L154	1.0000000	L154	1.0000000
L155	1.0000000	L155	1.0000000
L156	1.0000000	L156	1.0000000
L157	1.0000000	L157	1.0000000
L158	1.0000000	L158	1.0000000
L159	1.0000000	L159	1.0000000
L160	1.0000000	L160	1.0000000
L161	1.0000000	L161	1.0000000
L162	1.0000000	L162	1.0000000
L163	1.0000000	L163	1.0000000
L164	1.0000000	L164	1.0000000
L165	1.0000000	L165	1.0000000
L166	1.0000000	L166	1.0000000
L167	1.0000000	L167	1.0000000
L168	1.0000000	L168	1.0000000
L169	1.0000000	L169	1.0000000
L170	1.0000000	L170	1.0000000
L171	1.0000000	L171	1.0000000
L172	1.0000000	L172	1.0000000
L173	1.0000000	L173	1.0000000
L174	1.0000000	L174	1.0000000
L175	1.0000000	L175	1.0000000
L176	1.0000000	L176	1.0000000
L177	1.0000000	L177	1.0000000
L178	1.0000000	L178	1.0000000
L179	1.0000000	L179	1.0000000
L180	1.0000000	L180	1.0000000
L181	1.0000000	L181	1.0000000
L182	1.0000000	L182	1.0000000
L183	1.0000000	L183	1.0000000
L184	1.0000000	L184	1.0000000
L185	1.0000000	L185	1.0000000
L186	1.0000000	L186	1.0000000
L187	1.0000000	L187	1.0000000
L188	1.0000000	L188	1.0000000
L189	1.0000000	L189	1.0000000
L190	1.0000000	L190	1.0000000
L191	1.0000000	L191	1.0000000
L192	1.0000000	L192	1.0000000
L193	1.0000000	L193	1.0000000
L194	1.0000000	L194	1.0000000
L195	1.0000000	L195	1.0000000
L196	1.0000000	L196	1.0000000
L197	1.0000000	L197	1.0000000
L198	1.0000000	L198	1.0000000
L199	1.0000000	L199	1.0000000
L200	1.0000000	L200	1.0000000



VICINITY MAP not to scale
 This document and all representations on this document are the property of Thomas & Hutton. Reproduction of this document or full or partial without written consent of Thomas & Hutton unless this document bears a notice of public release. ALTERATIONS TO THIS DOCUMENT ARE NOT PERMITTED.



TOTAL CORNER TABLE		TOTAL CHECK TABLE	
L101	1.0000000	L101	1.0000000
L102	1.0000000	L102	1.0000000
L103	1.0000000	L103	1.0000000
L104	1.0000000	L104	1.0000000
L105	1.0000000	L105	1.0000000
L106	1.0000000	L106	1.0000000
L107	1.0000000	L107	1.0000000
L108	1.0000000	L108	1.0000000
L109	1.0000000	L109	1.0000000
L110	1.0000000	L110	1.0000000
L111	1.0000000	L111	1.0000000
L112	1.0000000	L112	1.0000000
L113	1.0000000	L113	1.0000000
L114	1.0000000	L114	1.0000000
L115	1.0000000	L115	1.0000000
L116	1.0000000	L116	1.0000000
L117	1.0000000	L117	1.0000000
L118	1.0000000	L118	1.0000000
L119	1.0000000	L119	1.0000000
L120	1.0000000	L120	1.0000000
L121	1.0000000	L121	1.0000000
L122	1.0000000	L122	1.0000000
L123	1.0000000	L123	1.0000000
L124	1.0000000	L124	1.0000000
L125	1.0000000	L125	1.0000000
L126	1.0000000	L126	1.0000000
L127	1.0000000	L127	1.0000000
L128	1.0000000	L128	1.0000000
L129	1.0000000	L129	1.0000000
L130	1.0000000	L130	1.0000000
L131	1.0000000	L131	1.0000000
L132	1.0000000	L132	1.0000000
L133	1.0000000	L133	1.0000000
L134	1.0000000	L134	1.0000000
L135	1.0000000	L135	1.0000000
L136	1.0000000	L136	1.0000000
L137	1.0000000	L137	1.0000000
L138	1.0000000	L138	1.0000000
L139	1.0000000	L139	1.0000000
L140	1.0000000	L140	1.0000000
L141	1.0000000	L141	1.0000000
L142	1.0000000	L142	1.0000000
L143	1.0000000	L143	1.0000000
L144	1.0000000	L144	1.0000000
L145	1.0000000	L145	1.0000000
L146	1.0000000	L146	1.0000000
L147	1.0000000	L147	1.0000000
L148	1.0000000	L148	1.0000000
L149	1.0000000	L149	1.0000000
L150	1.0000000	L150	1.0000000
L151	1.0000000	L151	1.0000000
L152	1.0000000	L152	1.0000000
L153	1.0000000	L153	1.0000000
L154	1.0000000	L154	1.0000000
L155	1.0000000	L155	1.0000000
L156	1.0000000	L156	1.0000000
L157	1.0000000	L157	1.0000000
L158	1.0000000	L158	1.0000000
L159	1.0000000	L159	1.0000000
L160	1.0000000	L160	1.0000000
L161	1.0000000	L161	1.0000000
L162	1.0000000	L162	1.0000000
L163	1.0000000	L163	1.0000000
L164	1.0000000	L164	1.0000000
L165	1.0000000	L165	1.0000000
L166	1.0000000	L166	1.0000000
L167	1.0000000	L167	1.0000000
L168	1.0000000	L168	1.0000000
L169	1.0000000	L169	1.0000000
L170	1.0000000	L170	1.0000000
L171	1.0000000	L171	1.0000000
L172	1.0000000	L172	1.0000000
L173	1.0000000	L173	1.0000000
L174	1.0000000	L174	1.0000000
L175	1.0000000	L175	1.0000000
L176	1.0000000	L176	1.0000000
L177	1.0000000	L177	1.0000000
L178	1.0000000	L178	1.0000000
L179	1.0000000	L179	1.0000000
L180	1.0000000	L180	1.0000000
L181	1.0000000	L181	1.0000000
L182	1.0000000	L182	1.0000000
L183	1.0000000	L183	1.0000000
L184	1.0000000	L184	1.0000000
L185	1.0000000	L185	1.0000000
L186	1.0000000	L186	1.0000000
L187	1.0000000	L187	1.0000000
L188	1.0000000	L188	1.0000000
L189	1.0000000	L189	1.0000000
L190	1.0000000	L190	1.0000000
L191	1.0000000	L191	1.0000000
L192	1.0000000	L192	1.0000000
L193	1.0000000	L193	1.0000000
L194	1.0000000	L194	1.0000000
L195	1.0000000	L195	1.0000000
L196	1.0000000	L196	1.0000000
L197	1.0000000	L197	1.0000000
L198	1.0000000	L198	1.0000000
L199	1.0000000	L199	1.0000000
L200	1.0000000	L200	1.0000000

I HEREBY STATE THAT TO THE BEST OF MY PROFESSIONAL KNOWLEDGE, INFORMATION, AND BELIEF, THE SURVEY SHOWN HEREON WAS MADE IN ACCORDANCE WITH THE STANDARDS OF PRACTICE MANUAL PREPARED BY THE SURVEYORS IN SOUTH CAROLINA, AND MEETS OR EXCEEDS THE REQUIREMENTS FOR A CLASS "A" SURVEY AS SPECIFIED THEREIN.

ROBERT K. HORTON, JR.
 SOUTH CAROLINA PROFESSIONAL LAND SURVEYOR
 LICENSE NO. 16997

A SUBDIVISION PLAT OF
**PARCELS A1, A2, A3,
 PARCEL B AND
 OUTPARCELS B-1 & B-2**
 FORMERLY
**PARCEL A & PARCEL B
 RED BLUFF
 PLANTATION**
 JASPER COUNTY,
 SOUTH CAROLINA

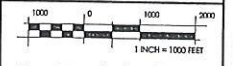
prepared for
RED BLUFF TRACT, LLC

PLAT Volume 0038 Page 0001 - 0016
 Filed for Record in JASPER COUNTY BOOK
 Plat Large Fee \$20.00

THOMAS & HUTTON
 Engineering | Surveying | Planning | GIS | Consulting

50 Park of Commerce Way
 Savannah, GA 31405 • 912.234.5300

www.thomasonhutton.com



DATE 11-13-16
 LPO NOV 2016
 JOB 25286.0001 SHEET 1 OF 2

- LEGEND**
- BENCHMARK
 - MONUMENT (NO MONUMENT)
 - CONCRETE MONUMENT (GULCH)
 - IRON PIPE (GULCH)
 - IRON PIPE (SET)
 - IRON BEAM (GULCH)
 - IRON BEAM (SET)
 - IRON BEAM (SET)
 - APPROXIMATE CORNER
 - MEAN HIGH WATER LINE
 - MEAN LOW WATER LINE

JASPER COUNTY DEVELOPMENT BOARD
 "EXEMPT FOR RECORDING"
 DATE 11/13/16

